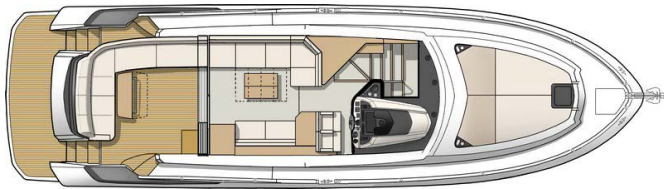
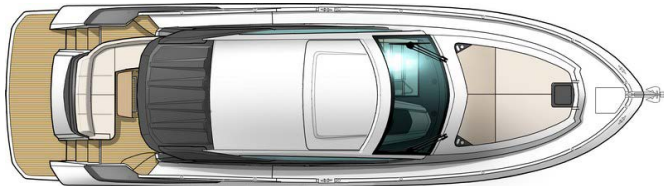


# Gran Turismo 50

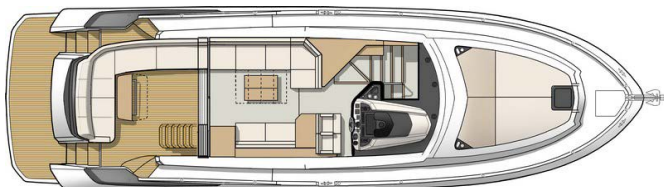
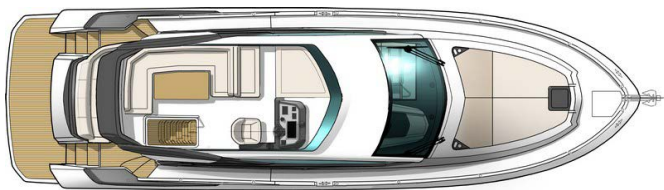
## Hardtop & Sport fly

General Equipment list - North America

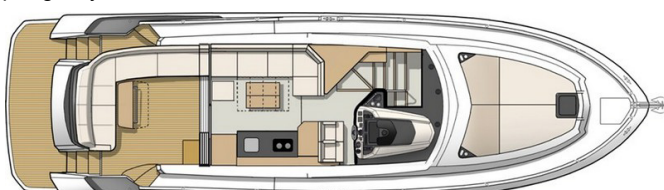
### Hardtop version:



### Sport fly version:



### Upper galley version



### GENERAL SPECIFICATIONS

• Overall Length (L.O.A)*:	15,78 m	51'9"
• Hull length:	14,17 m	46'6"
• Overall width:	4,40 m	14'5"
• Hull Beam:	4,38 m	14'4"
• Light displacement (EC):		
- Hardtop version	12 961 kg	28,566 lbs
- Sport fly version	13 210 kg	29,115 lbs
• Air draft:		
- Hardtop version	5,34 m	17'6"
- Sport fly version	5,09 m	16'8"
• Draft (max):	1,16 m	3'10"
• Fuel tank capacity:	2 x 650 L	2 x 172 US Gal
• Fresh water capacity:	400 L	106 US Gal
• Maximum engine power:	2 x 353 kW - 2 x 480 HP	2 x 480 HP
• Max engine certification:	2 x 353 kW - 2 x 480 HP	2 x 480 HP

\* (with aft swim platform)

### ARCHITECTS / DESIGNERS

- Naval Architect: Bénéteau Power Boats
- Design: Nuvolari & Lenard
- Interior accommodation: Andreani Design

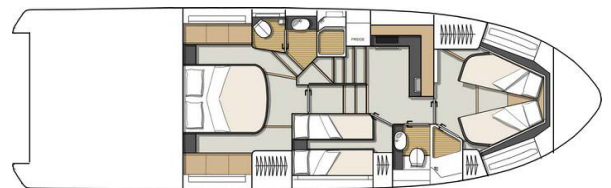
### EC CERTIFICATION

- Category B - 12 people
- Category C - 12 people

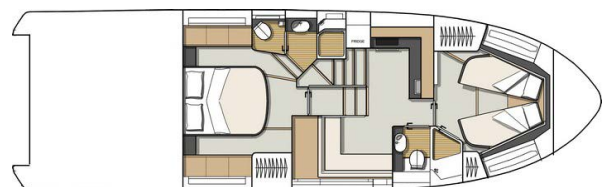
### AIR STEP SYSTEM®

- R.L. Jeantet
- P. Tableau
- M. Tronquez

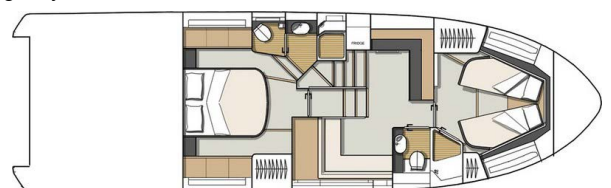
### 3 cabin layout:



### 2 cabin layout:



### Upper galley version



### STANDARD EQUIPMENT

#### CONSTRUCTION

##### HULL

- Air Step system®
- White hull
- Composition:
  - Sandwich (polyester resin - fiberglass - balsa core)
  - Hull counter molding laminated in monolithic (polyester resin - fiberglass)
  - Molding by infusion
- 9 Opening portholes (fitted with curtains)

##### DECK

- Composition:
  - Sandwich (polyester resin - fiberglass - balsa core)
  - Deck counter molding laminated in monolithic (polyester resin - fiberglass)
  - Molding by infusion

#### DECK EQUIPMENT

- Courtesy light in cockpit
- Navigation lights

#### MOORING - ANCHORING GEAR

- Bow fitting with anchor securing system
- 2 000 W Electric windlass (with remote control)
- 2 Forward cleats, 2 central and 4 aft in stainless steel

#### SAFETY ON DECK

- Half open pulpit in stainless steel with guardrail and handrail
- 2 Stainless steel handrails on access to sidedeck steps
- 1 Taupe faux leather hand rail, behind the cockpit bench seat

#### COCKPIT

- Access through a gate
- 8-seater outside benchseat (convertible into sunbed with optional table)
- Space for life raft for 12 people
- Storage locker for mooring lines and fenders
- Cockpit shower hose with hot water mixer tap / Cold water
- Swim platform
- Access cover to the engine room
- Access to the port side deck from the swim platform and the cockpit
- Stainless steel swimming ladder
- Garage for semi-rigid tender and engine about 2,90 m / 9'5"
- Electrically-opened, using 2 electric struts
- Access to engine room by the garage
- Aft galley (Option)

#### SPORT FLY (only on Sport fly versions)

- Ladder to access in the cockpit
- U-shaped salon for 6 persons
- Teak table
- Two seater copilot bench, convertible into sun pad
- Pilot seat
- Instrument panel
- Engine function indicators on 4" digital display (Volvo)
- Space for electronics (12")

### INTERIOR

- Brown oak laminated floors
- Woodwork Alpi matt walnut (standard)
- Woodwork brushed Alpi oak (Option)
- Teak floor in salon (Option)
- Carpet (Option)
- Choice of assorted interior and exterior upholstery:
  - PVC Marlin Brilliant White (standard)
  - Twin colored Marlin Brilliant White & Valencia Sisal PVC
  - Sumbrella Chartres Silver

#### WHEELHOUSE

Headroom: 2,10 m / 6'11"

- 4-panel sliding window door with curtains (mirror tinted)
- Lights (spotlights and indirect lights)

#### STEERING STATION

- Transparent windscreen, black-lacquered mullions
- 2 Windscreen wipers with washers
- Defogging system
- Pilot and copilot bench with Bolster function, Black and Taupe PVC upholstery
- White dashboard, Gloss black dashboard & Black faux leather padding
- Compass
- Engine function indicators on 4" VOLVO digital display
- USB socket (12 V)
- Glove box
- Space for electronics (16")
- 1 Taupe faux leather hand rail
- 2 Cup holders
- Opening porthole (starboard)
- Fiberglass hard-top with built-in electric sunroof (only on Hardtop versions)

#### SALON

Wheelhouse salon:

- 2 Large electric side glazed windows (Option)
- Bench seat 6 persons and wooden table matching the woodwork, Pedestal electric table
- 2 seats facing sofa
- Stool
- Space for 40" screen television, Bose speakers (options)
- 2 110V Sockets
- Pre-wiring for 32" TV, Atoll audio system, Bose 2.1 Loudspeakers

#### LOWER SALON (2 cabin layout)

Headroom: 1,98 m / 6'6"

- Bench seating - 4 people
- Storage cupboards
- Opening hull porthole in salon
- 110 V Power outlet
- Pre-wiring for 22" TV

#### OR: 3RD CABIN (3 cabin layout)

- 2 Single berths
- Marine mattress
- Hanging locker + Storage cupboards
- 110 V Power outlet

#### GALLEY(Lower galley version)

Headroom: 1,98 m / 6'5"

- Stainless steel sink with mixer tap
- Ceramic hob, 2 burners
- Counter-top in light grey Corian
- Microwave oven and grill
- 2 Drawer refrigerators (90 L)
- Cutlery storage
- Garbage bin
- Opening hull porthole
- Storage cupboards, Magic corner
- Alpaga grey lacquered furniture trim level
- 2 110V Sockets

### GALLEY (Upper galley version)

Headroom: 2,10 m / 6'11"

- Galley unit:
  - Stainless steel sink with mixer tap
  - Ceramic hob, 2 burners
  - Corian countertop
  - Storage
  - Garbage bin
  - Drawer refrigerator (75 L)
- Low stowage space:
  - Corian countertop
  - Microwave oven and grill
  - 190 L Fridge Freezer
  - Cutlery storage
  - Opening hull porthole
  - Storage cupboards, Magic corner
  - Alpaga grey lacquered furniture trim level
  - 2 220V Sockets

### OWNER'S CABIN (AFT)

Headroom: 1,89 m / 6'2"

- Double berth (1,62 m x 1,94 m / 5'4" x 6'4")
- Bed mounted on cylinder lifts with 3 stowage compartments
- Marine mattress with slatted base
- Padded bed headboard
- 2 Bedside tables, Hanging lockers, 6 Storage lockers
- Spotlight and reading lighting, & Indirect light
- 2 110V Sockets
- 2 Panoramic opening porthole-fitted windows with blinds
- Space for LED 32" screen television
- Mirror
- Pre-wiring for 32" TV, Atoll audio system, Bose 2.1 Loudspeakers

### OWNER'S HEAD COMPARTMENT

Headroom: 1,95 m / 6'5"

- Electric toilet Tecma
- Shower separated by translucent door
- Sink with mixer tap
- Mirror and storage space
- Automatic shower water drainage
- 110 V Power outlet
- Opening hull porthole

### VIP CABIN (FORWARD)

Headroom: 1,96 m / 6'5"

- 1 Double berth (1,42 x 1,90 m / 4'8" x 6'3")
- Marine mattress with slatted base
- 2 Panoramic opening porthole-fitted windows with blinds
- Hanging locker, Shelves
- 110 V Power outlet
- Spotlight and reading lighting, & Indirect light
- Mirror
- Pre-wiring for 22" TV, Atoll audio system, Fusion Loudspeakers

### VIP HEAD COMPARTMENT

Headroom: 1,97 m / 6'5"

- Electric toilet Tecma
- Shower separated by translucent door
- Sink with mixer tap
- Mirror and storage space
- Automatic shower water drainage
- 110 V Power outlet
- Opening hull porthole

### ENGINE

#### Propulsion IPS:

- Standard: Volvo 2 x IPS 600 - 2 x 435 HP Diesel (2 x 324 kW) EVC-E + Joystick
- Option: Volvo 2 x IPS 650 - 2 x 480 HP Diesel (2 x 353 kW) EVC-E + Joystick
- Fuel filter with decanter
- Sea water filter
- Air intakes on the deck for engine compartment cooling
- Hot air extraction forced by electric ventilators
- Engine room foam soundproofed
- Fire extinguishing system activated from the steering station
- Stainless steel fuel fill
- 2 x 650 L / 172 US Gal Aluminum fuel tanks
- Bow thruster
- Lenco Flaps

#### Steering system:

- Hydraulic steering
- 2 Outdrives with counter rotating propellers

#### Volvo Software:

- Trip computer
- Cruise control
- Single lever
- Low speed

### ELECTRICITY

- 24/110V electrical panel with Scheiber screen for controlling electrical appliances
- Radio-controlled wireless switches (without battery)
- 2 110 V - 50 Hz 63A shore supply with 15 m cable
- 8 Batteries 12 V (4 engine batteries 50 Amp + 4 service batteries 140 Amp)
- 2 Electric bilge pumps
- 2 Extinguishers
- 12/24V inverter
- Battery charger 24 V 60 Amp
- Interior power outlet 110 V
- Spotlight and reading lighting
- 11 KVA 230 V / 60 Hz Generator
- 2 KVA - 115 V - 50 Hz Inverter

### PLUMBING

- 1 400 L / 106 US Gal Rotomolded water tank
- Stainless steel water fill
- Water pump for pressurizing hot/cold water system
- 60 L / 16 US Gal Water heater working off engine exchanger and 110 V
- Shore freshwater supply

### TRIM LEVEL & PACKS

#### TRIM LEVEL

	ESSENTIAL	COMFORT
<ul style="list-style-type: none"> <li>• Protective covers exterior upholstery</li> <li>• Glendining Cable master</li> <li>• Drawer refrigerator in salon (75 L)</li> <li>• Ship Control</li> <li>• Air conditioning pre-arrangement</li> <li>• Garmin 16" multi-function GPS screen and Depth sounder</li> <li>• For Sport fly version: Garmin 12" screen on flybridge</li> <li>• Atoll audio system, Bose 2.1 speakers in the salon and Fusion speakers in the cockpit (+ For Sport fly version: Speakers on flybridge)</li> <li>• Teak slatted swim platform</li> </ul>	<ul style="list-style-type: none"> <li>▪</li> <li>▪</li> <li>▪</li> <li>▪</li> <li>▪</li> <li>▪</li> <li>▪</li> <li>▪</li> <li>▪</li> </ul>	<ul style="list-style-type: none"> <li>▪</li> <li>▪</li> <li>▪</li> <li>▪</li> <li>▪</li> <li>▪</li> <li>▪</li> <li>▪</li> <li>▪</li> </ul>
<ul style="list-style-type: none"> <li>• Storage cupboard, in the cockpit</li> <li>• Tender launching system (winch and rollers)</li> <li>• Forward sun mattress with adjustable backrest</li> <li>• Luxe leather steering wheel</li> <li>• Yacht Case - Tableware</li> </ul>		<ul style="list-style-type: none"> <li>▪</li> <li>▪</li> <li>▪</li> <li>▪</li> <li>▪</li> </ul>

#### PACKS

##### ELECTRONIC PACK

- Fitted Auto pilot
- Garmin Broadband 4G Radar
- Wifi module for ipad
- Aft camera
- VHF + AIS Garmin
- For Sport fly version: Dual-station VHF

##### SPORT CHIC PACK

- Luminous ceiling, in owner's cabin
- Faux leather furniture tops
- 2 Mattresses, in owner's cabin

#### OPTIONS

##### INTERIOR LAYOUT / ONBOARD COMFORT

- Mediterranean A/C 57 000 BTU - 110 V
- Tropical A/C 63 000 BTU - 110 V
- Diesel heater "air pulse" (in wheelhouse, Cabins, lower salon)
- freezer
- Central vacuum system
- Dishwasher
- Washer / dryer - 110 V / 50 Hz
- Yacht Case Elle Deco - Tableware
- Marlin Brilliant White & Valencia Sisal two-color PVC salon upholstery
- Sumbrella Chartres Silver salon upholstery
- Taupe carpet
- Ivory carpet
- Berber Dune carpet
- Teak floor, in salon (does not include the steering station)
- Mosquito screens
- Venetian blinds, in salon
- Side electric wheelhouse windows

##### ELECTRICAL SYSTEM

- Underwater lights

##### WATER SYSTEM

- Fresh water deck washing pump

##### EXTERIOR OPTIONS

- Complete mooring/anchoring kit
- Aft galley (On swim platform)
- Drawer fridge on Sport fly (only on Sport fly versions)
- Marlin Brilliant White & Valencia Sisal two-color PVC exterior upholstery
- Sunbrella Chartres Silver exterior upholstery
- Protective covers exterior upholstery
- Sunworker Black exterior wheelhouse curtains
- Retractable black electric blind, in the cockpit (only on Hardtop versions)
- Hydraulic swim platform (max load 350Kg)
- Integrated hydraulic gangway
- Dinghy cradle integrated into swim platform
- Williams MiniJet 280 Tender
- Graphite Fly bimini (only on Sport fly versions)
- Graphite Aft cockpit enclosure (only on Sport fly versions)
- Grey blue and white hull
- Hull wrap

##### ENGINE

- Extra joystick in cockpit
- Automatic trim tabs (Zipwake)