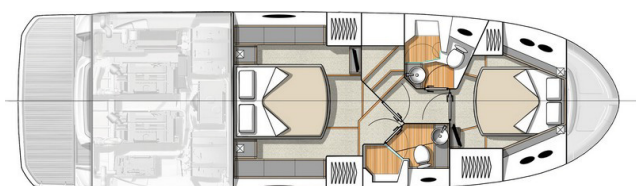
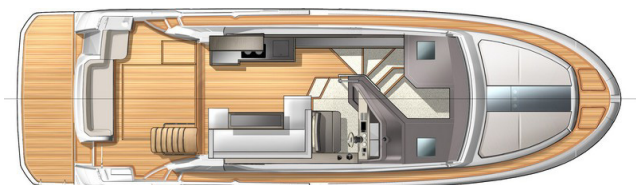
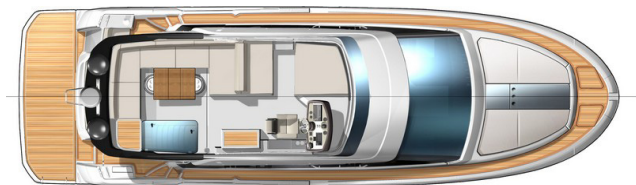


General Equipment list



GENERAL SPECIFICATIONS

• L.O.A*:	13,80 m - 13,90 m	45'3" - 45'7"
• Hull length:	12,01 m	39'5"
• Overall width:	4,09 m	13'5"
• Beam:	4,06 m	13'4"
• Light displacement (EC):	12 023 kg	26,499 lbs
• Air draught:	5,44 m	17'10"
• Draught (max):	1,23 m	4'
• Fuel capacity:	2 x 535 L	2 x 141 US Gal
• Freshwater capacity:	2 x 200 L	2 x 53 US Gal
• Maximum engine power:	2 x 259 Kw - 2 x 370 HP	2 x 370 HP
• Max engine certification:	2 x 259 Kw - 2 x 370 HP	2 x 370 HP

* (with aft swimming platform)

ARCHITECTS / DESIGNERS

- Design: Nuvolari & Lenard
- Interior accommodation: Andreani Design

CE CERTIFICATION

- Category B - 12 people
- Category C - 14 people
- Category D - 14 people

STANDARD EQUIPMENT

CONSTRUCTION

HULL

Composition:

- White Cream Gelcoat
- Sandwich (Polyester resin - Glass fiber - Balsa core)
- Structural hull counter moulding in monolithic laminate (Polyester resin - Glass fiber)
- 8 opening portholes

DECK

Composition:

- White Cream Gelcoat
- Sandwich (Polyester resin - Glass fiber - Balsa core)
- Diamond tip type non-slip covering
- Structural deck counter moulded in monolithic laminate

DECK EQUIPMENT

- Radar support in stainless steel
- Navigation lights
- LED courtesy lights in gangways, Steps and Stern deck

MOORING LINES - MOORING

- Bow fitting
- Electric windlass 12V, Power 1000 W
- Remote control in mooring locker + windlass control from wheelhouse and flying bridge steering stations
- 2 Mooring lockers
- 2 Forward cleats, 2 central and 4 aft in stainless steel
- 2 Stainless steel fairleads to aft of cockpit

SAFETY ON DECK

- Stainless steel Half open pulpit with teak step and hand rail
- Stainless steel pulpit surrounding all flybridge
- 2 Stainless steel handrails on access to side decks steps
- 1 Hand rail on aft transom

DECK

- 3 cup holders
- 1 Opening deck hatch, 1 Fixed hatch

COCKPIT

- Gate access (Starboard)
- 4 persons saloon
- Uphostery PVC Diamante Snow, piping Diamante Espresso, Open cell foam
- Access hatch to engine compartment
- Access hatch to large locker
- Cockpit shower hose with hot water mixer tap / Cold water
- Access stairway to flybridge
- Solid wood bathing platform (3,85 m x 1,30 m / 12'8" x 4'3")
- Retractable ladder in swimming platform with solid wood steps and stainless steel handrails
- Direct and indirect lighting LED

FLYBRIDGE

- Grey tinted windscreen, surrounded by stainless steel frame
- Steering console with: Steering compass - Steering wheel - Electrical engine controls - Tiller angle indicator - Rev counter - Fuel gauge - 12 V socket - IPS joystick
- Controls for windlass, flaps, lighting, navigation lights, Bilge pumps
- Height adjustable pilot seat(s)
- 2 Cupholders & stowage
- Two seater co-pilot bench to port, convertible into sun lounger (2 m x 1 m / 6'7" x 3'3")
- Saloon, 6 people
- Natural Solid wood folding table, with 4 integrated cup holders
- Galley unit: Sink hot water / Cold water, Place for electric grill (option), Storage, Bin. Plain solid wood doors and countertop
- Radar support, Aerials and lights in Black lacquered polyester
- Courtesy lighting LED
- Exterior upholstery PVC Diamante Snow, piping Diamante Espresso, Open cell foam

INTERIOR

- Choice of woodwork: Alpi brushed Oak or Alpi Matt finish walnut
- Interior decor matching the choice of woodwork
- Laminate floors in the galley : Brown Oak (standard) or Teak slatted (option)
- Ivory carpet on the companionway & Cabins
- Teak slatted floor in head compartments

WHEELHOUSE

- Headroom: 1,87 m to 1,97 m / 6'2" to 6'6"
- 3 door sliding bay, mirror tinted. Curtain "Cream"
 - "romans" blinds in "Cream" fabrics
 - Direct and indirect lighting LED
 - Electrical panel 12V/220V, starboard side of the entrance

STEERING STATION

- One-piece windscreen, in non-tinted laminated glass
- Mirror tinted side windows, 2 openings (Port and starboard)
- 2 Windscreen wipers with washers
- Demisting system
- Pilot and copilot bench with Bolster function, PVC upholstery (standard) or Leather (optional)
- Dashboard with Light Brown metallic paint
- Volvo EVC screen (with additional software as an option)
- Tiller angle indicator
- Flaps control
- Volvo throttle & controls
- IPS joystick
- Steering compass
- Functional controls: Wiper, Demister, Fog horn, Navigation lights, Windlass
- Valet tray
- Space for 2 multifunction 12" screens
- 1 12 V Socket

SALOON

- 6 seater sofa upholstered in "Vibrant beige" fabric, with lounge & 1 Stool
- Foldable table, "Eclectic brown" or "Red C" leather panel
- 1 Storage drawer under sofas
- Location for 26" LED television, Audio & DVD player and Bose speakers (Options)
- 1 220 V Socket

GALLEY

Galley-type layout

- Stainless steel sink with mixer tap
- Ceramic hob (2 burners) Kenyon
- Corian countertop
- 130 L refrigerator
- Cutlery drawer
- Lacquer finished furniture
- Storage cupboards
- 2 220 V Sockets

OWNER CABIN (AFT)

Headroom: 1,85 m / 6'1"

- Full beam stateroom
- Double berth (2,07 m x 1,57 m / 6'9" x 5'2")
- Marine mattress
- Padded headboard
- 2 Bedside tables with drawer and reading light
- 2 Illuminated wardrobes with hanging locker and shelving
- Direct and indirect lighting LED
- 2 220 V Sockets
- 2 Panoramic opening porthole-fitted portlights with blinds, Cream Blackout curtain
- Space for 26" LED TV (option)
- Storage cupboards (Port and starboard)

OWNER HEAD COMPARTMENT

Headroom: 2,05 m / 6'9"

- Quietflush electric toilet + Shared rigid tank (120 L)
- Shower separated by translucent door
- Shower with mixer tap
- Basin with mixer tap
- Mirror and storage space
- Automatic shower water drainage (by gravity, towards a reserve plug 50L / 13 US Gal)
- 1 220 V Socket
- Opening hull porthole with Cream blackout blinds
- 1 Towel rail

VIP CABIN (FORWARD)

Headroom: 2,03 m / 6'8"

- Double berth (1,97 m x 1,46 m / 6'6" x 4'9")
- Marine mattress
- Padded headboard
- 4 Opening hull portholes, with blinds, Cream Blackout curtain
- Long natural light wells, with opening deck hatch, fitted blinds and mosquito net
- 2 Illuminated wardrobes with hanging locker and shelving
- Storage
- 1 Drawer under the bed
- 2 220 V Sockets
- Direct and indirect lighting LED

VIP HEAD COMPARTMENT

Headroom: 2,07 m / 6'9"

- Quietflush electric toilet + Shared rigid tank (120 L)
- Separated shower stall with door
- Basin with mixer tap
- Shower with mixer tap
- Mirror and storage space
- Automatic shower water drainage (by gravity, towards a reserve plug 50L / 13 US Gal)
- Opening hull porthole with Cream blackout blinds
- 1 Towel rail
- 1 220 V Socket

ENGINE

Pods propulsion

- Volvo 2 x IPS 500 - 2 x D6 370 CV/HPDiesel (2 x 272 Kw) EVC-E + Joystick

- Fuel filter with decanter
- Sea water filter
- Air intakes on the deck for engine compartment cooling
- Hot air extraction forced by electric ventilators
- Engine room foam soundproofed
- Fire extinguishing system activated from the steering station (Wheelhouse and Fly)
- Stainless steel fuel filler
- 2 fuel tanks, each with a 535 L (141 US Gal) capacity

Steering system:

- Hydraulic steering
- 2 Drives with counter rotative propellers
- IPS control joystick (Wheelhouse & Flybridge)
- 1 220 V Socket, in Engine area

Softs Volvo:

- Trip computer
- Cruise control
- Single lever
- Low speed

ELECTRICITY

- 12 V 220 V Electrical panel
- 6 12 V batteries (2 Engine batteries: 50 Ah + 4 Service batteries: 140 Ah)
- Radio-controlled wireless switches (without battery)
- 1 230 V - 50 Hz 32A shore supply with 15 m / 49'3" cable (with air conditioning option: 1 230 V Socket - 63A - 50 Hz/60 Hz)
- 3 Bilge pumps: 2 Electric pumps - 1 Manual pump
- 1 Extinguisher
- Power distributor
- Battery charger: 12 V - 40 Ah
- Sockets 220V: in saloon, Galley, Heads and Cabin
- 12V socket on Steering stations (Wheelhouse and Flybridge)
- Direct and indirect lighting LED (internal and external)

PLUMBING

- 2 Roto moulded water tanks, 2 x 200 L / 2 x 53 US Gal capacity of
- Stainless steel water filler
- Water pump for pressurising hot/cold water system
- 40 L / 11 US Gal water heater working off engine exchanger and 220 V



BENETEAU

Monte Carlo 4

General Equipment list

TRIM LEVEL

	AVANTAGE	ELEGANCE	EXCLUSIVE
<ul style="list-style-type: none"> • Forward sunbed with adjustable back rest and protective cover • Wheelhouse side windows (Port and starboard) with electric opening • Teak slatted Cockpit & Galley floors • Top of furniture upholstered with leather • Teak folding table in flybridge • Fully opening stern bay (pivoting door to port) 	<ul style="list-style-type: none"> ■ ■ ■ ■ ■ ■ 	<ul style="list-style-type: none"> ■ ■ ■ ■ ■ ■ 	<ul style="list-style-type: none"> ■ ■ ■ ■ ■ ■
<ul style="list-style-type: none"> • Multifunction SIMRAD NSS 12" evo2 screen in wheelhouse + 1 NSS 12" evo2 on flying bridge • TV LED 26" + Fusion 700 Audio/DVD player in saloon (USB + Bluetooth connection) + 2 Remote controls (Cockpit & Fly) • 12 V / 220 V inverter - 700 VA 		<ul style="list-style-type: none"> ■ ■ ■ 	<ul style="list-style-type: none"> ■ ■ ■
<ul style="list-style-type: none"> • Hydraulic swim platform • 11 kVA Generator • Bow thruster station dual 			<ul style="list-style-type: none"> ■ ■ ■

OPTIONS

PACKS

ELECTRONIC PACK

- Simrad Broadband 4G Radar
- Fitted Auto pilot
- Simrad VHF coupled to AIS system receiver
- Wifi connection module for ipad



OTHER OPTIONS

INTERIOR / ONBOARD COMFORT

- Chilled water Mediterranean air conditioning 33 kBTU - Distribution by ceilings
- Chilled water Tropical air conditioning 42 kBTU - Distribution by ceilings
- Heating (water system) 12 Kw
- Interior SIMRAD NSS 12" evo2 additional screen
- TV LED 23" in master cabin + Fusion Audio/DVD player + MP3 + Bose 2.1 Hi-fi system
- TV LED 23" in the VIP cabin + Fusion Audio/DVD player + MP3 + Bose 2.1 Hi-fi system
- Divine White Saloon upholstery
- Mondo Crème Saloon upholstery
- Aura Brown Saloon upholstery
- Leather saloon upholstery
- Nubuck leather saloon upholstery
- Leather interior driver's bench - Grey Beige
- Tendress Taupe carpet in the cabins and passageways
- Carpet Berber Dune
- Doors padded with leathers
- Grill & Microwave combined oven (40 L)
- Icemaker (Drawer)
- Dishwasher for 6 place settings
- Washer dryer
- Slat mattresses
- Double berth in saloon
- Set of interior and exterior pillows for decoration

EXTERIOR

- Complete mooring kit: Anchor Delta 25 kg + Chain (12 mm diameter, Length: 40 m) + Line (22 mm diameter, Length: 50 m) + 4 Moorings lines (18mm, Length: 15 m) + 6 Fenders (230 mm diameter, Length: 86 cm)
- Bow thruster station dual
- Windlass control with chain counter
- Generator ONAN 11 KVA / 220V / 50 Hz

- 3rd Engine control in cockpit (Joystick, Thruster)
- Integrated hydraulic gangway
- Deck searchlight on fly
- 2 Underwater lights
- Exterior upholstery PVC Diamante Snow, piping Diamante Snow
- Solid wood cockpit table with stainless steel legs and protective cover
- Galley unit on transom: Electric grill "Kenyon", Sink hot/cold, Work top, Lighting
- Retractable electric sun awning
- Aft cockpit closing "Graphite & Beige"
- Flying bridge bimini top "Graphite"
- Protective covers, outside upholsteries: Cockpit & Flybridge
- Outside wheelhouse curtains ("Sunworker" black)
- Electric pump Deck wash
- Shore freshwater supply
- Roller for 220V shore power lead
- Exterior loudspeakers "Bose": Cockpit, Forward sun deck and Flybridge
- Loud speakers "Fusion" + Remote control on forward sunbed
- Pilot seat (Flybridge) Besenzoni
- Electric grill "Kenyon" (Flybridge)
- 40 L refrigerator (Flybridge)
- Cooler in flying bridge
- Canvas cover (Flybridge) Graphite
- Rear camera
- Thermal imaging camera
- 2 Folding chairs in teak "Rex" (MC Special Edition)
- Mount Dinghy On Aft platform
- WILLIAMS 285 Turbojet tender 80HP special edition for MC (not compatible with galley unit on transom)
- Aqua blue & cream hull
- Grey blue and Cream hull
- Metallic hull paint



America/Export: Please note that electric power and appliances may be different and/ or not offered on standard or on option. They would be adapted locally by your dealer.