

GENERAL SPECIFICATIONS

• Overall Length (L.O.A)*:	15,10 m	49'6"
• Hull length:	13,25 m	43'6"
• Overall width:	4,32 m	14'2"
• Hull Beam:	4,27 m	14'
• Light displacement (EC):	14 238 kg	31,381 lbs
• Air draft:	5,85 m	19'2"
• Draft (min-max):	0,90 - 1,27 m	2'11" - 4'2"
• Fuel tank capacity:	2 x 650 L	2 x 172 US Gal
• Fresh water capacity:	2 x 300 L	2 x 79 US Gal
• Maximum engine power:	2 x 307 kW - 2 x 435 HP	2 x 435 HP
• Max engine certification:	2 x 307 kW - 2 x 435 HP	2 x 435 HP

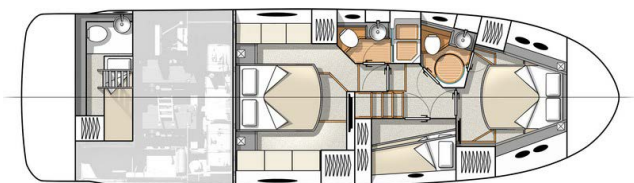
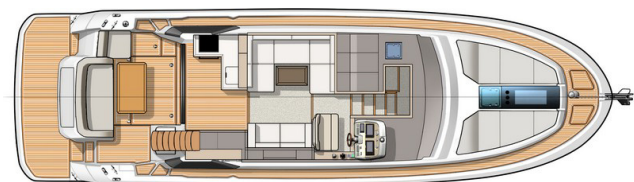
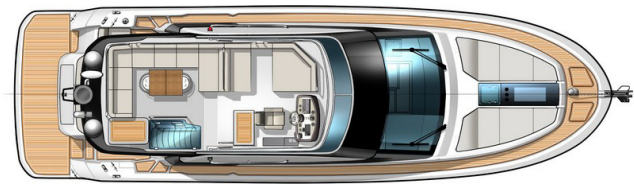
* (with aft swim platform)

ARCHITECTS / DESIGNERS

- Design: Nuvolari & Lenard
- Interior accommodation: Andreani Design

CE CERTIFICATION

- Category B - 12 people
- Category C - 14 people
- Category D - 16 people





STANDARD EQUIPMENT

CONSTRUCTION

HULL

Composition:

- White Cream Gelcoat
- Sandwich (polyester resin - fiberglass - balsa core)
- Structural hull counter molding in monolithic laminate (polyester resin - fiberglass)
- 12 Portholes including 10 Opening portholes

DECK

Composition:

- White Cream Gelcoat
- Sandwich (polyester resin - fiberglass - balsa core)
- Diamond tip type non-slip surface
- Structural deck counter molded in monolithic laminate

DECK EQUIPMENT

- Radar support in stainless steel
- Navigation lights
- LED courtesy lights in gangways, Steps and Stern deck

MOORING - ANCHORING GEAR

- Bow fitting
- Electric windlass 24V, Power 2000 W
- Remote control in mooring locker + Windlass control from wheelhouse and flybridge helm stations
- 2 Mooring lockers
- 2 Forward cleats, 2 central and 4 aft in stainless steel
- 4 Stainless steel fairleads to aft of cockpit

SAFETY ON DECK

- Stainless steel half open pulpit with teak step and hand rail
- Open pulpit port and starboard
- 2 Stainless steel handrails on access to sidedeck steps
- 1 Hand rail on rear table

DECK

- 3 Cup holders
- 1 Opening deck hatch, 1 fixed hatch

COCKPIT

- Gate access (starboard)
- 6 People salon
- Uphostery PVC Diamante Snow, piping Diamante Espresso, Open cell foam
- Access hatch to engine compartment
- Access hatch to large storage locker (standard) or crew cabin (optional)
- Cockpit shower hose with hot water mixer tap / Cold water
- Access stairway to flybridge, built-in storage locker
- Solid wood swim platform
- Retractable ladder in swimming platform with solid wood steps and stainless steel handrails
- Direct and indirect LED lighting

FLYBRIDGE

- Grey tinted windscreen, surrounded by stainless steel frame
- Steering console with: Steering compass - Steering wheel - Electrical engine controls - Rudder angle indicator - Rev counter - Fuel gauge - 12 V Power outlet - IPS joystick
- Controls for windlass, trim tabs, lighting, navigation lights, Bilge pumps
- Besenzoni pilot seat
- 2 Cup holders + Glove box
- Two seater co-pilot bench to port, convertible into sunpad (2 m x 1,05 m / 6'7" x 3'5")
- Salon, 8 people
- Natural solid wood folding table, with 4 integrated cup holders
- Galley unit: Sink hot water / Cold water, Electric grill (optional), Storage, Garbage bin. Solid wood doors and countertop
- Radar support hoop, Aerials and lights in black lacquered polyester
- Courtesy lighting (LED)
- Exterior upholstery PVC Diamante Snow, piping Diamante Espresso, Open cell foam
- 1x Simrad NSS 12" evo3
- Bow thruster control

INTERIOR

- Choice of wood interior: Alpi brushed Oak or Alpi mat Walnut
- Laminate floors in the galley : Brun Oak (standard) or Teak slatted (optional)
- Ivory carpet in salon and cabins
- Teak slatted floor in head compartments

WHEELHOUSE

Headroom: 1,99 m / 6'6"

- Mirror tinted glass bay window and stainless steel frame with full opening (1 opening and 2 folding). Curtains in Cream
- "Roman" blinds in "Cream" fabric
- Direct and indirect LED lighting
- Electrical panel 24V/110V, starboard side of the entrance

STEERING STATION

- One-piece windscreen, in non-tinted laminated glass
- Mirror tinted side windows, 2 openings (port and starboard)
- 2 Windscreen wipers with washers
- Defogging system
- Pilot and copilot bench with Bolster function, PVC upholstery (standard) or leather (optional)
- Storage drawer under bench seat
- Dashboard with Clay metallic paint
- Volvo EVC screen (with additional software as an option)
- Rudder angle indicator
- Trim tab control
- Volvo throttle & controls
- IPS joystick
- Steering compass
- Functional controls: wiper, defogging, Fog horn, Navigation lights, Windlass
- Glove box
- 2x Simrad NSS 12" evo3
- 1 12 V Power outlet
- SIMRAD VHF coupled to AIS US system receiver
- SIMRAD Broadband 4G Radar
- SIMRAD Auto pilot
- SIMRAD Module - Wifi connection
- Bow thruster control

**SALON**

- Sofa 4-6 seats, upholstery "Divine" fabric, with pillows of comfort
- 2 seats facing sofa, Upholstery "Divine" fabric, with pillows of comfort
- Folding table padded faux leather top
- 3 Storage drawer under sofas
- 32" LED TV precabbling + Bose 2.1 Hi-fi system
- Fusion 700 Audio/DVD player + Dock iPod + Bluetooth connection + 2 Remote controls (Cockpit and flybridge) + Outside speakers
- 1 110 V Power outlet

GALLEY

Kitchen-type layout

- Optimum storage space: "magic corner"
- Stainless steel sink with mixer tap
- Ceramic hob (2 burners) Kenyon
- Corian countertop
- Fridge freezer + ice maker with drawers : 150 L / 40 US Gal/Standard (or 225 L / 59 US Gal/optional) (High cabinet galley layout)
- Cutlery & glasses storage
- Garbage bin
- Lacquer finished furniture
- 2 110 V Power outlets

OWNER CABIN (AFT)

Headroom: 1,85 m / 6'1"

- Full beam cabin
- Double berth (2,03 m x 1,56 m / 6'8" x 5'1")
- Marine mattress with bed base
- Padded bed headboard
- 2 Bedside tables with drawer and reading light
- 2 Illuminated wardrobes with hanging locker and shelving
- Direct and indirect LED lighting
- 2 110 V Power outlets
- 2 Panoramic opening porthole-fitted windows with blinds, Cream blackout curtain
- Space for 32" LED TV (Option)
- Storage cupboards (port and starboard)
- Mirror

OWNER HEAD COMPARTMENT

Headroom: 2 m / 6'7"

- Electric toilet Vacuflush + shared rigid holding tank (150 L / 40 US Gal)
- Separated shower stall with stainless steel profiled doors
- Teak slatted seat
- Shower with mixer tap
- Sink with mixer tap fitted
- Mirror and storage space
- Automatic shower water drainage (by gravity, towards a reserve plug 50 L / 13 US Gal)
- 1 110 V Power outlet
- Opening hull porthole with Cream blackout blinds
- 1 Towel rail
- 32" LED TV precabbling + Bose 2 Hi-fi system + Fusion Audio/DVD player + Dock iPod

VIP CABIN (FORWARD)

Headroom: 1,94 m / 6'4"

- Double berth (1,95 m x 1,50 m / 6'5" x 4'11")
- Marine mattress with bed base
- Padded bed headboard
- 4 Opening hull portholes, with shades, Cream blackout curtain
- Long natural light wells, with opening deck hatch, fitted blinds and mosquito screens
- 2 Illuminated wardrobes with hanging locker and shelving
- Storage
- 2 Drawers beneath bunk for storage
- 2 110 V Power outlets
- Direct and indirect LED lighting
- 26" LED TV precabbling + Bose 2 Hi-fi system + Fusion Audio/DVD player + Dock iPod

VIP HEAD COMPARTMENT

Headroom: 2 m / 6'7"

- Electric toilet Vacuflush + shared rigid holding tank (150 L / 40 US Gal)
- Separated shower stall with circular door
- Sink with mixer tap fitted
- Shower with mixer tap
- Mirror and storage space
- Automatic shower water drainage (by gravity, towards a reserve plug 50 L / 13 US Gal)
- Opening hull porthole with "Cream" blinds
- 1 Towel rail
- 1 110 V Power outlet

GUEST CABIN (SIDE)

Headroom: 1,98 m / 6'6"

- 2 Bunk beds: 1,98 m x 0,62 m and 1,98 m x 0,77 m / 6'6" x 2'0" and 6'6" x 2'6"
- Marine mattresses
- Padded bed headboards
- 2 Opening hull portholes, with shades, Cream blackout curtain
- Bedside tables with drawer and reading light
- 1 110 V Power outlet
- Hanging locker with lighting
- 22" LED TV precabbling + Bose 2 Hi-fi system + Fusion Audio/DVD player + Dock iPod



ENGINE

Pods propulsion:

- Volvo 2 x IPS 600 - 2 x D6 435 CV/HPDiesel (2 x 307 kW) EVC-E
- Fuel filter with decanter
- Sea water filter
- Air intakes on the deck for engine compartment cooling
- Hot air extraction forced by electric ventilators
- Engine room foam soundproofed
- Fire extinguishing system activated from the steering station (wheelhouse and Fly)
- Stainless steel fuel fill
- 2 x 650 L / 2 x 172 US Gal Aluminium fuel tanks

Steering system:

- Electric steering
- 2 Outdrives with counter rotating propellers "Jackshaft"
- IPS joystick control (wheelhouse & flybridge)

Volvo Software:

- Trip computer
- Cruise control
- Single lever
- Low speed

ELECTRICITY

- 24 V 110 V Electrical panel
- 8 12 V batteries (4 engine batteries: 50 Amp + 4 service batteries: 140 Amp)
- Radio-controlled wireless switches (without battery)
- 2 110 V - 60 Hz 63A shore supply with 15 m cable (or 2 220 V - 60 Hz according to country)
- 3 Bilge pumps: 2 electric - 1 manual
- 1 Extinguisher
- 12 V / 110 V inverter - 2000 VA
- Load balancer
- Battery charger: 24 V 60 Amp
- Standard equipment: 13 power outlet 110V: in salon, Galley, heads and cabin
- 12V Power outlet at steering stations (1 wheelhouse and 1 flybridge)
- Direct and indirect LED LED (internal and external)
- Cabin sockets (USA)
- Shore socket extension cord 110 V + Glendinning 30A
- 13.5 kVA Generator - 230 V / 60 Hz

PLUMBING

- 2 Rotomolded water tanks, 2 x 330 L / 2 87 US Gal
- Stainless steel water fill
- Water pump for pressurizing hot/cold water system
- 60 L / 16 US Gal water heater working off engine heat exchanger and 110 V



TRIM LEVEL

	ADVANTAGE	EXCLUSIVE
<ul style="list-style-type: none"> • Wheelhouse side windows (port and starboard) with electric opening • Furniture topped with leather upholstery • Teak slatted cockpit & galley floors • Forward sunbed with adjustable back rest and protective cover • Galley unit on transom (Grill, Sink hot/cold, Countertop) • 110 V Microwave oven - Upper cupboard 	<ul style="list-style-type: none"> • ■ • ■ • ■ • ■ • ■ • ■ 	<ul style="list-style-type: none"> • ■ • ■ • ■ • ■ • ■ • ■
<ul style="list-style-type: none"> • Hydraulic swim platform (max load 350Kg) • Dinghy cradle integrated to the platform • Deck searchlight with remote control • Dock water inlet • Fresh water deck washing pump 		<ul style="list-style-type: none"> • ■ • ■ • ■ • ■ • ■

OPTIONS

OPTIONAL LAYOUT VERSIONS

CREW CABIN (accessible from cockpit)

Headroom: 1,60 m / 5'3"

- Single bed (2 m x 0,70 m / 6'7" x 2'4")
- Shower with tray
- VacuFlush toilet
- Water washbasin with hot and cold water mixer tap under pressure
- 1 Fixed porthole + 1 Opening porthole

"HIGH CABINET" GALLEY (On the starboard side)

- 2 Drawer refrigerator (145 L)
- 1 Freezer with drawers, + integrated icemaker (75 L)
- Storage cupboard (Position for Dishwasher option)



OTHERS

INTERIOR

- Cooker hood
- Dishwasher for 6 sets (starboard, "High cabinet" galley)
- Washing machine + Tumble dryer
- Chilled water Mediterranean air conditioning 36 kBTU (18 kBTU in wheelhouse, 9 kBTU in owner's cabin and heads, 9 kBTU in the VIP cabin and Guest cabin) - Distribution by ceilings
- Chilled water Tropical air conditioning 60 kBTU (24 kBTU + 12 kBTU in wheelhouse, 9 kBTU in owner's cabin and heads, 9 kBTU in the VIP cabin and 6 kBTU in guest cabin) - Distribution by ceilings
- Air conditioning 4 kBTU in the crew cabin
- 12 kW heating, water system
- 2 kW heating, in the crew cabin
- Mosquito screens (Cabins and Aft window door)
- Set of interior and exterior decorative pillows
- Doors padded with faux leather
- Leather pilot bench seat
- Fabric upholstery in the salon: Vibrant beige, Mimic, Lounge robust Gull
- Leather salon upholstery
- Nubuck leather salon upholstery
- Dune Berber or Taupe carpet (Cabins & passageway)
- 2 Multifunction screens SIMRAD NSO 16" (replacing the NSS 12" (x 2) in wheelhouse)
- Teak floor in salon and helm
- ELLE Decor Yatch table setting for Monte Carlo

EXTERIOR

- Mooring kit: Anchor Delta 25 kg + Chain 12 mm diameter (Length: 40 m) + Line 22 mm diameter (Length: 50 m) + 4 Moorings lines 18 mm (Length: 15 m) + 6 Fenders (230 mm diameter, Length: 860 mm)
- 3rd Engine control in cockpit (Joystick, Thruster)
- Aft camera
- Underwater lights (x2)
- Retractable electric sun awning
- Integrated telescopic gangway
- Solid wood cockpit table with stainless steel legs and protective cover
- 40 L refrigerator (flybridge)
- Electric grill "Kenyon" (flybridge)
- Cockpit aft enclosure Graphite
- Flybridge bimini Graphite with Built-in LED lighting
- Black outside wheelhouse curtains
- Ivory & Taupe exterior upholstery
- Protective covers exterior upholstery: Cockpit, Forward sun deck, flybridge
- Aqua blue & cream hull
- Hull paint
- WILLIAMS 285 Turbojet tender 80HP special edition for MC
- Flybridge carpet Pure Corail
- 1 Additional NSS 12" evo3 screen on flybridge